

CRATE SIZES:

A. 100 x 37 x 73	~2095 lbs
B. 100 x 53 x 73	~2315 lbs
C. 94 x 40 x 24	~295 lbs

- MINIMUM HEAD ROOM FOR RAISING THE HEAT EXCHANGER SECTION IS 98-1/2"

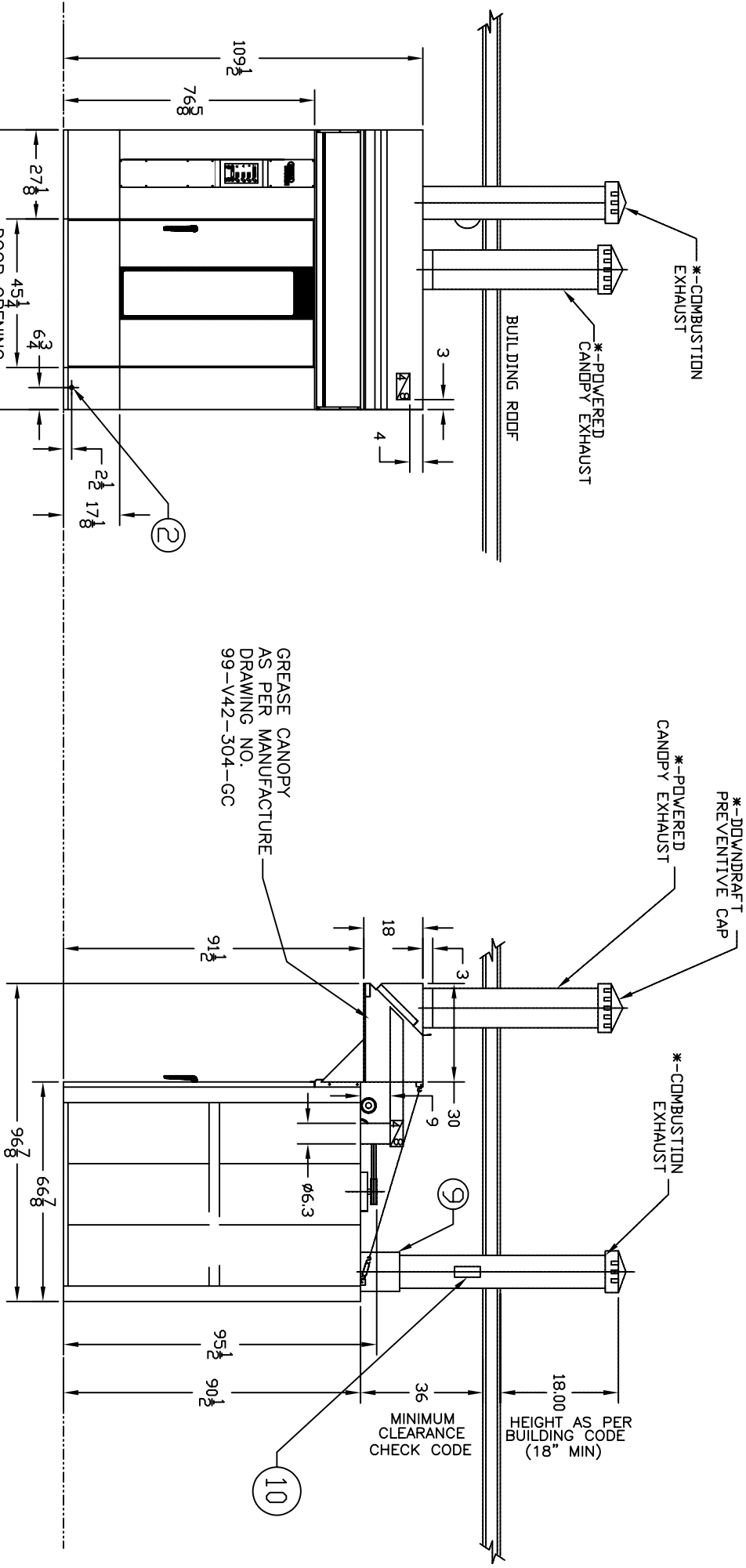
- UTILITY SCHEDULE**
1. WATER CONNECTION, 3/8" NPT
 2. WATER DRAIN CONNECTION 1/2" NPT FRONT STANDARD, REAR AVAILABLE
 3. ELECTRICAL CONNECTION
 4. DAMPER CONNECTION, AUTOMATIC OVERPRESSURE DAMPER, ø6.3"
 5. 12" DIA. HOOD CONNECTION
 6. SUPPLY AIR, EVACUATION STEAM 4"x1-1/2"
 7. 10" DIA. FLUE GAS CONNECTION
 8. GAS CONNECTION 3/4" NPT
 9. DRAFT DIVERTER
 10. DRAFT INDUCER (Tjertlund D-3)

- CONSTRUCTION:**
- STAINLESS STEEL INTERIOR AND EXTERIOR
 - ROCK WOOL MINERAL INSULATION THROUGHOUT
- PLUMBING:**
- 1/2" DRAIN CONNECTION
 - 3/8" WATER LINE @ 50-80 PSI WATER PRESSURE
 - WATER PRESSURE REGULATOR AND WATER FILTER RECOMMENDED, BUT NOT SUPPLIED
- FUEL SPECIFICATIONS:**
- NATURAL GAS, (PROPANE OPTIONAL)
- TYPE: NATURAL GAS, (PROPANE OPTIONAL)
- POWER INPUT: 340,000 BTUH - NATURAL GAS, PROPANE
- SUPPLY PRESSURE: 5.5-14.0" WC NATURAL GAS, PROPANE
- REFER TO THE BURNER MANUAL FOR PROPER MAINTENANCE, ADJUSTMENTS AND OPERATING INSTRUCTIONS.
- ELECTRICAL SPECIFICATIONS:**
- 2 CONNECTIONS REQUIRED: 208-240 V / 3 PH / 60 HZ / 15 A BRANCH CIRCUIT 120 V / 1 PH / 60 HZ / 15 A BRANCH CIRCUIT
 - OPTIONAL: AVAILABLE AT EXTRA COST: 440-480 V / 3 PH / 60 HZ / 15 A BRANCH CIRCUIT

- VENTING SPECIFICATIONS:**
- COMBUSTION CHAMBER EXHAUST: TYPE "B" VENT
 - GREASE HOOD EXHAUST VENT TO LOCAL CODE (1200 CFM MIN.)

- * DRAFT INDUCER IS PROVIDED TO MAINTAIN PROPER DRAFT DURING BURNER OPERATION**
- DRAFT INDUCER (SHIPPED SEPARATE) MUST BE INSTALLED IN COMBUSTION STACK ABOVE DRAFT DIVERTER. INSTALLATION BY HVAC CONTRACTOR.
 - IMPORTANT - USE ONLY TIERLUND D-3 INDUCER
 - SENSING PORT OF DRAFT INDUCER MUST BE CONNECTED TO SENSING PORT OF PROVING SWITCH (LOCATED IN ELECTRICAL CABINET) WITH 1/4" ALUMINUM TUBING (SUPPLIED).
 - DRAFT INDUCER MOTOR MUST BE WIRED TO RELAY AND NEUTRAL IN OVEN ELECTRICAL CABINET. SEE DIAGRAM E-9008-040-0100 FOR DETAILS. WIRING MATERIALS BY OTHERS. WIRING ACCORDING TO LOCAL AND NATIONAL CODES.
 - CHECK OVERFIRE DRAFT AND ADJUST TO NEGATIVE: -.04 to -.20 INCHES W.C. USING FIRE CHAMBER SIGHT GLASS PORT DURING BURNER OPERATION

- NOTES:**
1. INSTALLATION MUST COMPLY WITH ALL NATIONAL, STATE AND LOCAL CODES IN EFFECT AT THE TIME OF INSTALLATION.
 2. THE OVEN SHOULD BE INSTALLED ON A NON-COMBUSTIBLE FLOOR WITH AN INCLINATION NOT TO EXCEED 1/16" PER FOOT.
 3. INSTALLATIONS AND START-UP MUST BE PERFORMED BY A QUALIFIED TECHNICIAN.
 - IMPROPER INSTALLATION, ADJUSTMENT, ALTERATION, SERVICE OR MAINTENANCE CAN CAUSE PROPERTY DAMAGE, INJURY OR DEATH. READ THE INSTALLATION, OPERATING AND MAINTENANCE INSTRUCTIONS THOROUGHLY BEFORE INSTALLING OR SERVICING THIS EQUIPMENT.
 4. *ALL EXHAUST DUCTING TO BE DONE BY OTHERS. (CONNECTIONS FROM AND TO DAMPERS, HOOD, STACKS, FANS AND CAPS ETC TO BE SUPPLIED AND INSTALLED BY OTHERS.)
 5. FREE DOOR OPENING, 42.12" x 75.08" WEIGHT, APPROX. 1700K & NET. (~4300LBS)



GREASE CANOPY AS PER MANUFACTURE DRAWING NO. 99-V42-304-GC

SPECIFICATION DRAWING SUBJECT TO CHANGE WITHOUT NOTICE

SPECIFICATION DRAWING FOR CONSTRUCTION
DIMENSIONS ARE APPROXIMATE

BY: DAC	DATE: 5/06/02	SCALE: 1/2" = 1'	SIZE: D
REGION NUMBER: 11/03	DWG NO: SPECV42LEP-GC	TITLE: GREASE CANOPY V42 GAS FIRED E-PANEL RACK OVEN	

GEMINI
9900 GANTNER ROAD, PHILADELPHIA, PA 19115, USA. phone (215) 673-3020 fax (215) 673-3844

THIS PRINT IS PROPERTY OF THE GEMINI BAKERY EQUIPMENT CO. SUBJECT TO RETURN TO GEMINI, AND IS LOANED TO YOU FOR INSTALLATION ONLY. IT IS NOT TO BE REPRODUCED, COPIED, OR IN ANY WAY DETACHED FROM THE INTERESTS OF THE GEMINI BAKERY EQUIPMENT CO.